

RMS-Net

Radio Messaging System Software Suite

The Innovative Software Solution for
Today's Commercial Radio System Users



RMS-Net merges radio and computer technology into a single software solution to provide a host of safety features that will improve both management, and health and security by promoting efficient communication with mobile workforces. RMS-Net software integrates desktop PC's, Icom radios, base-station and talk-through repeaters into a single sophisticated system capable of establishing a versatile local or wide area network.

A central computer logs all radio traffic whilst desktop users can stay in touch via their own computers. RMS-Net supports a broad range of communication methods including; SELCALL; FFSK (allowing text messaging) and GPS mapping. Based upon your specific requirements RMS-Net offers essential safety features such as Mandown alerts, lone-worker functions, panic buttons and anti-theft devices.

MAJOR SELLING POINTS

- Improves health & safety performance with the use of mandown, loneworker and panic button functions.
- RMS-Net text messaging provides office staff with more efficient and private communications to a mobile workforce.
- The system enables a portable radio user to transmit preset status messages at the simple touch of a button.
- Reduces voice traffic on scarce radio channels, plus more radios can operate on the same number of channels.
- Alert staff of security issues without the risk of being overheard. Use text messages to circulate security information such as descriptions of known offenders (ideal for shop centre applications).
- 'In-touch with one-touch' - mobile staff will benefit from simple message sending.
- Remotely monitor the RMS-Net system offsite, via the Internet.
- Users automatically log on or off to the system when switching their radio on or off.
- Highly-flexible integrated package.
- Choose from a basic package featuring messaging and emergency features, or a full version with security functions and full mapping.

FEATURES

Highly flexible integrated package.

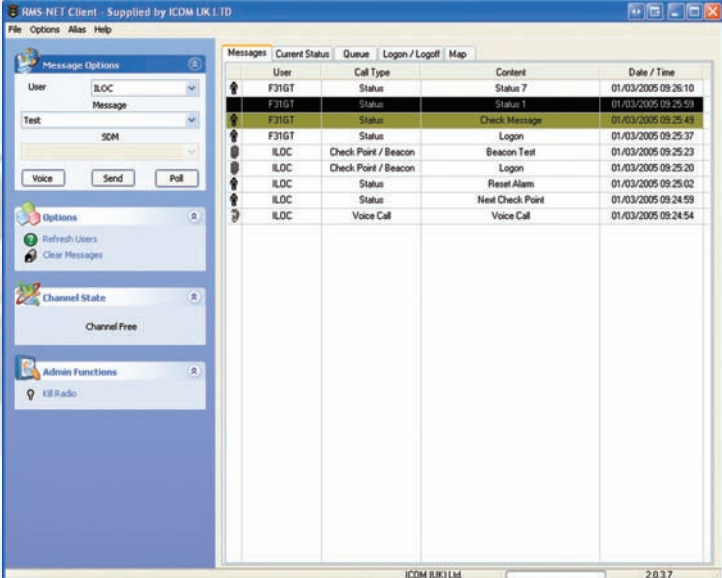
RMS-Net is the base platform for other software modules, which can be added and integrated into the system. Currently the I-Loc Security Management System or I-Read Guard Tour Management System can be integrated into this system. This means RMS-Net can be used in a variety of markets where health and safety, communication and management control are of importance. These include schools, universities, hospitals, road haulage, logistic centres, prisons, power plants, hazardous industrial areas or any areas of high security risk.

A tool for management control

A major strength of RMS-Net is its reporting features. All radio traffic is logged and stored on a central database. This is ideal for management control and future resource planning including personnel database management. It may provide motivation for staff to perform their assigned tasks and provide conclusive documentation that they have done so. With the addition of the I-Loc/I-Read software suite, the reporting features can provide a real-time view of staff resources deployed in or around an area. In addition the centralised nature of the system ensures rapid response to incidents as they occur as well as the managed prevention of potential incidents.

Helps to meet health & safety management requirements

RMS-Net satisfies the growing health, safety and management requirements that organisations face today. It provides a range of emergency alert functions with the use of Mandown, loneworker and panic button features.



The screenshot shows the RMS-Net Client software interface. The main window displays a table of messages with columns for User, Call Type, Content, and Date / Time. The table contains several entries, including status reports, logon messages, and check point/beacon tests. The interface also includes a sidebar with options like 'Message Options', 'Options', 'Channel State', and 'Admin Functions'.

User	Call Type	Content	Date / Time
F31GT	Status	Status 7	01/03/2005 09:26:10
F31GT	Status	Status 1	01/03/2005 09:25:59
F31GT	Status	Check Message	01/03/2005 09:25:48
F31GT	Status	Logon	01/03/2005 09:25:37
ILOC	Check Point / Beacon	Beacon Test	01/03/2005 09:25:23
ILOC	Check Point / Beacon	Logon	01/03/2005 09:25:20
ILOC	Status	Reset Alarm	01/03/2005 09:25:02
ILOC	Status	Next Check Point	01/03/2005 09:24:59
ILOC	Voice Call	Voice Call	01/03/2005 09:24:54

Remote administration

RMS-Net is a client/server application, which can run on a computer network with clients connected over a wide area. This makes it an ideal resource for a widespread organisation such as a council who has separate departments for waste, transportation. Each section could possibly have their own separate client.

Interrogate database

With RMS-Net it is possible to rapidly see the database to see which radios are logged on and being used on that day. This is achieved by decoding the radio's unique ID at switch on and flagging the user as active on the system. The handportables are supplied pre-programmed with text and status messages so users can easily keep the central control room informed of routine operations.



Provides a detailed view of staff deployment and resources

When used in conjunction with other modern security systems and in particular closed circuit TV, RMS-Net can provide a detailed view of activity and staff deployment in an area. The system is designed to be fully interactive ensuring dispatchers/supervisors are able to monitor and respond rapidly to situations as they occur.

Easy to set up, easy to use

With the Microsoft Windows operating system, RMS-Net follows the XP style for look and feel. The RMS-Net reporter program enables the user to analyse the performance and activity of their staff.

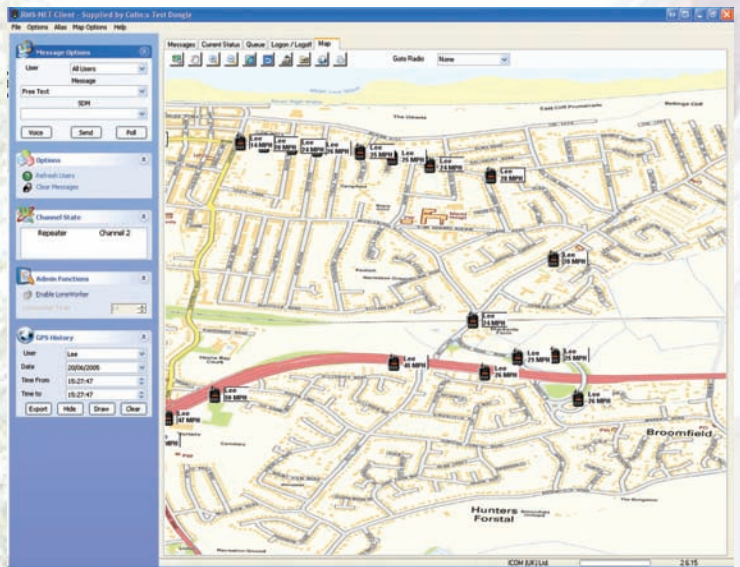
From	To	Data	MSG Type	Direction	Date	Time
COLINT	Server	RMS-NET Admin - Logon to Server	Logon	TX	02/11/2004	16:49:19
F31GT	Dist List	Logon	Status 23	RX	03/02/2005	12:01:01
F31GT	Dist List	Logon	Status 23	RX	03/02/2005	12:01:42
ILDC	Dist List	Logon	Check Point / B...	RX	03/02/2005	14:17:44
ILDC	Dist List	Low Battery - Test Flat	Battery	RX	03/02/2005	14:17:54
ILDC	Dist List	Test Flat	Check Point / B...	RX	03/02/2005	14:18:05
Server	F31GT	Auto Poll	Auto Poll	TX	03/02/2005	14:20:02
collet	F31GT	Pull Location	Pull	TX	03/02/2005	14:25:26
collet	F31GT	Pull Location	Pull	TX	03/02/2005	14:25:59
collet	F31GT	Pull Location	Pull	TX	03/02/2005	14:26:08
collet	F31GT	Pull Location	Pull	TX	03/02/2005	14:26:54
collet	F31GT	Pull Location	Pull	TX	03/02/2005	14:27:14
collet	F31GT	Pull Location	Pull	TX	03/02/2005	14:27:54
ILDC	Dist List	Test Beacon	Check Point / B...	RX	03/02/2005	14:28:31
Server	ILDC	Auto Poll	Auto Poll	TX	03/02/2005	14:33:45
Server	F31GT	Auto Poll	Auto Poll	TX	03/02/2005	14:35:02
ILDC	Dist List	Test Beacon	Check Point / B...	RX	03/02/2005	14:35:06
Server	F31GT	Auto Poll	Auto Poll	TX	03/02/2005	14:39:02
Server	ILDC	Auto Poll	Auto Poll	TX	03/02/2005	14:44:12
Server	F31GT	Auto Poll	Auto Poll	TX	03/02/2005	14:45:02
Server	F31GT	Auto Poll	Auto Poll	TX	03/02/2005	14:47:32
Server	ILDC	Auto Poll	Auto Poll	TX	03/02/2005	14:48:02
ILDC	Dist List	Test Beacon	Check Point / B...	RX	03/02/2005	14:48:10
Server	ILDC	Auto Poll	Auto Poll	TX	03/02/2005	14:48:18
Server	ILDC	Auto Poll	Auto Poll	TX	03/02/2005	14:48:30
ILDC	Dist List	Test Beacon	Check Point / B...	RX	03/02/2005	14:48:34
Server	ILDC	Auto Poll	Auto Poll	TX	03/02/2005	15:05:18
Server	F31GT	Auto Poll	Auto Poll	TX	03/02/2005	15:07:21
ILDC	Dist List	Test Beacon	Check Point / B...	RX	03/02/2005	15:07:25
Server	ILDC	Auto Poll	Auto Poll	TX	03/02/2005	15:09:12

Future-proof

An organisation can integrate new FFSK radios with any existing Selcall radios without the expense of replacing the whole fleet. RMS-Net is being constantly updated to incorporate new features such as multiple languages, voice-over IP and job stacking.

Mapping

Using GPS compatible radios, you can track your radios and display their positions on a map. Previous position data can be recalled from the provided history manager and plotted onto the map view, as shown on the mapping screen below.



Security Management Functions

I-Loc and I-Read offer the ability to locate staff in buildings and areas where GPS tracking is not possible. Using a series of automatic location beacons or manual location badges, the handportable radios will automatically send their position back to the server. If an I-Loc or I-Read radio is placed in an emergency mode (either via Mandown, Loneworker or Panic button), it transmits its position to the server. The server can then automatically send a text message to all other radios stating the name and position of the radio that is in the emergency mode.



Other Features:

- Emergency Message Functions
- Kill Radio
- Logon Acknowledgement
- Open Mute
- Message Queuing and Reminders
- Message Redistribution
- Multiple Channel Support
- And Much, Much More.

A Huge Range of Applications

Hospitals; Shopping Centres; Schools, Colleges and Universities; Powerplants; Property Management; Hazardous Industrial Areas; Maintenance Staff; Parking Control; Facility Managers or Areas of High Security Risk.

Specifications

RMS will work with our current range of commercial radios although functions will vary with each model.

Software

The RMS-Net program Suite consists of 4 programs:

1. Server Installed on the PC where the base radio is connected.
2. Client Installed on each PC that will access the Server, (can also be installed on Server PC).
3. Admin Installed on either a Server or Client PC.
4. Reporter Installed on either a Server or Client PC.

Hardware Requirements

RMS-NET Server

	Minimum	Optimum
CPU	1GHz	2GHz
RAM	512MB	1GB
Hard Drive	20GB	100GB
Network	Network Adapter 10/100 Mbps	
Other	1 USB port	1 USB port
Operating System	Windows XP, Windows 2000, Windows 2003 Server	
Monitor	17"	19"
Graphics card	1024x768, 16 bit	1600x1200, 24 bit

Note: No Intel Celeron or AMD Duron processors to be used, even if they are of a higher specification than minimum specification.

RMS-NET Client

	Minimum	Optimum
CPU	500MHz	2GHz
RAM	256MB	512MB
Hard Drive	10GB	20GB +
Network	Network Adapter 10/100 Mbps	
Other	1 USB port	1 USB port
Operating System	Windows XP, Windows 2000, Windows 2003 Server	
Monitor	17"	19"
Graphics card	1024x768, 16 bit	1600x1200, 24 bit

Icom UK Ltd.

Unit 9, Sea Street, Herne Bay, Kent CT6 8LD.

Telephone: 01227 741741. Fax: 01227 741742. e-mail: systems@icomuk.co.uk www.icomuk.co.uk